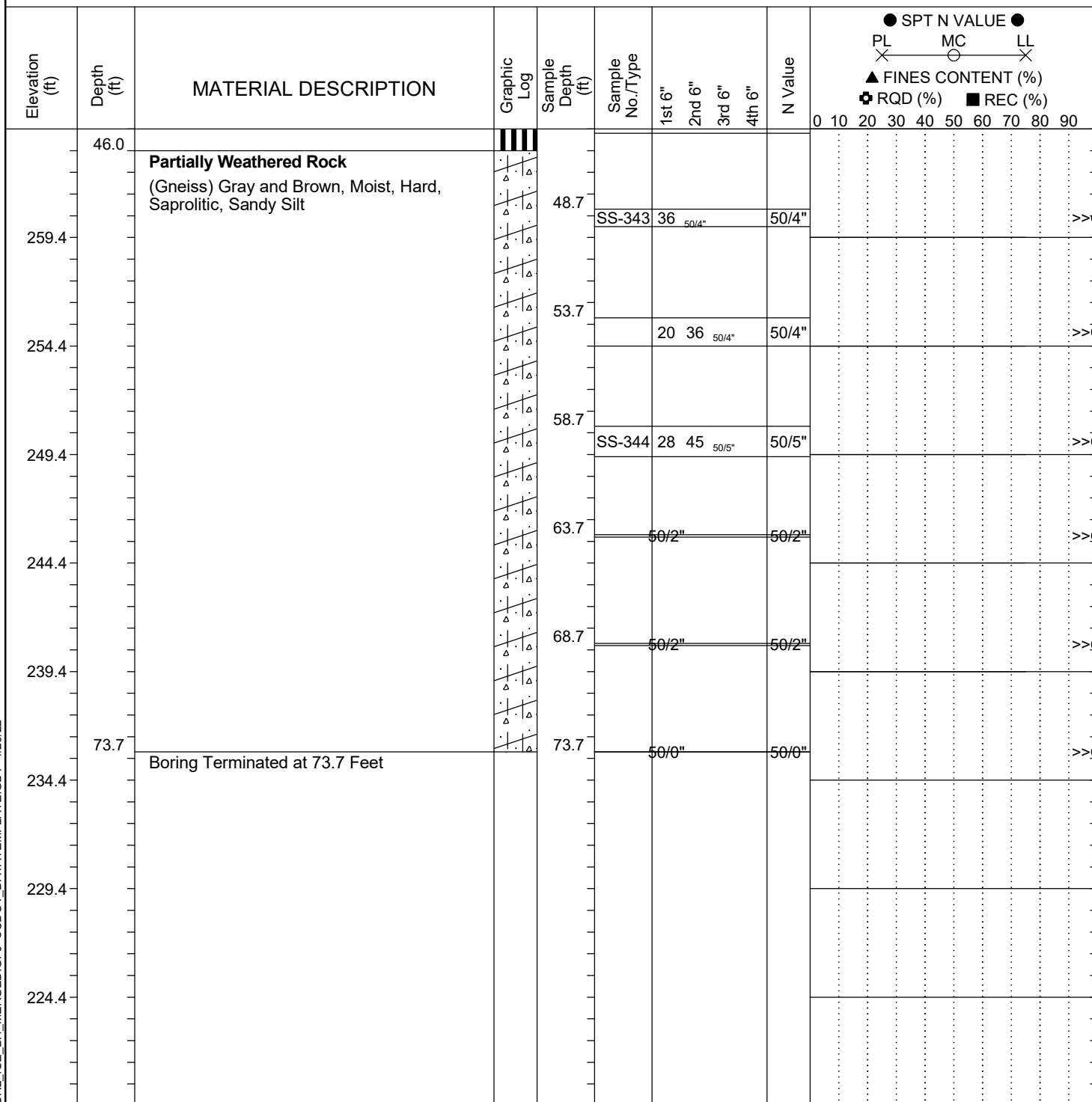


Project ID: P039719				County: Richland		Boring No.: G-134		
Site Description:		Carolina Crossroads Phase 2 - Bridge 42B					Route:	Broad River Rd.
Eng./Geo.: M. Stanbury		Boring Location: 204+13		Offset: 4 RT		Alignment: I20CL		
Elev.: 309.4 ft	Latitude: 34.03953053	Longitude: -81.09336881		Date Started: 3/14/2022				
Total Depth: 73.7 ft	Soil Depth: 73.7 ft	Core Depth: N/A ft		Date Completed: 3/14/2022				
Bore Hole Diameter (in): 2.25		Sampler Configuration		Liner Required: Y (N)		Liner Used: Y (N)		
Drill Machine: D-50 #439	Drill Method: RW		Hammer Type: Automatic		Energy Ratio: 90.8%			
Core Size: N/A	Driller: R. Cassell		Groundwater: TOB N/A		24HR FIAD			


**LEGEND**

SAMPLER TYPE		DRILLING METHOD	
SS - Split Spoon	NQ - Rock Core, 1-7/8"	HSA - Hollow Stem Auger	RW - Rotary Wash
UD - Undisturbed Sample	CU - Cuttings	CFA - Continuous Flight Augers	RC - Rock Core
AWG - Rock Core, 1-1/8"	CT - Continuous Tube	DC - Driving Casing	